

Loch Lomond & The Trossachs National Park

Pàirc Nàiseanta Loch Laomainn
is nan Tròisichean

2008 – 2011

COMMUNITY ACTION PLAN



BALLOCH & HALDANE

COMMUNITY ACTION PLAN 2008 - 2011

BALLOCH & HALDANE COMMUNITY FUTURES STEERING GROUP
LOCH LOMOND & THE TROSSACHS NATIONAL PARK AUTHORITY

BALLOCH AND HALDANE COMMUNITY ACTION PLAN

The people of Balloch & Haldane Community Council area prepared this, our second Community Action Plan, with the assistance of Loch Lomond and The Trossachs National Park Community Futures Programme.

The plan revises and replaces our initial Community Action Plan which is now out of date. Along with our many partners, including West Dunbartonshire Council, Scottish Enterprise Dunbartonshire and the Haldane Trust we have achieved some of the priorities in that Plan – such as:

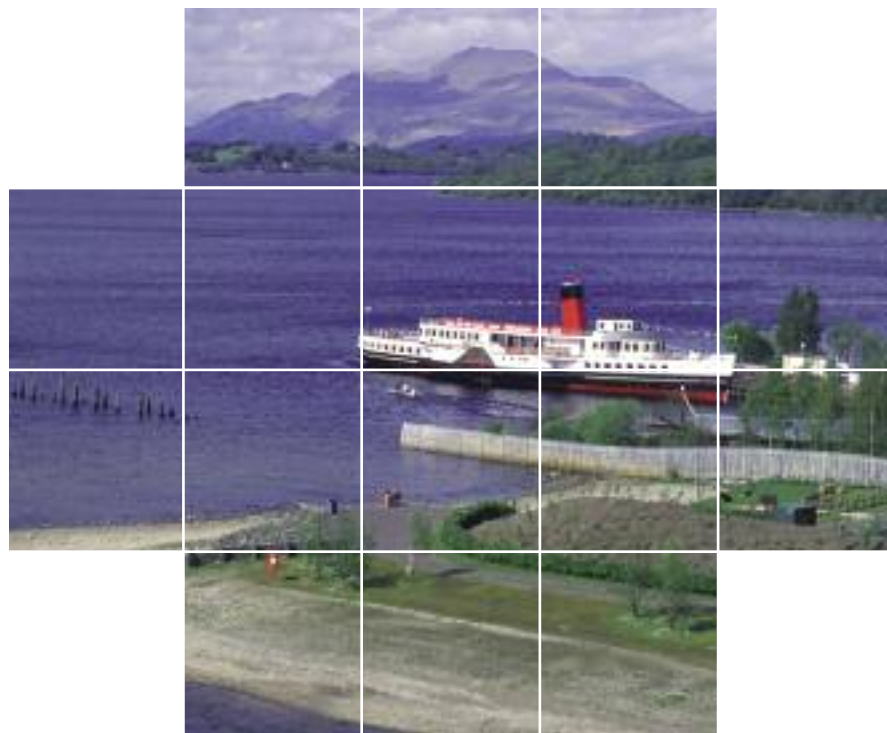
- Environmental improvements along Ballagan burn creating the ‘Haldane Green Corridor’
- Improvements in the Country Park
- Improvements to the local environment in Balloch
- Establishing the Network Youth Centre

Some other priorities are carried forward, while a few new important issues have been identified to reflect the changes in our community over the last few years.

The Plan summarises community views on

- Balloch and Haldane now
- the vision for its future
- the issues that matter most
- priorities for action

The Plan makes a clear statement about the type of place Balloch and Haldane aims to be – and what needs to be done.



BALLOCH AND HALDANE COMMUNITY FUTURES STEERING GROUP AND SUPPORT

A local Community Futures Steering Group was established as a sub group of the Balloch and Haldane Community Council. Members were Jim McQueen (Chairman), Jean Wood, Murdoch Cameron MBE, Alan Gardner, Jim Biddulph, Andy McAulay, Ian Gurr, Betty Boyd and Gary Groves.

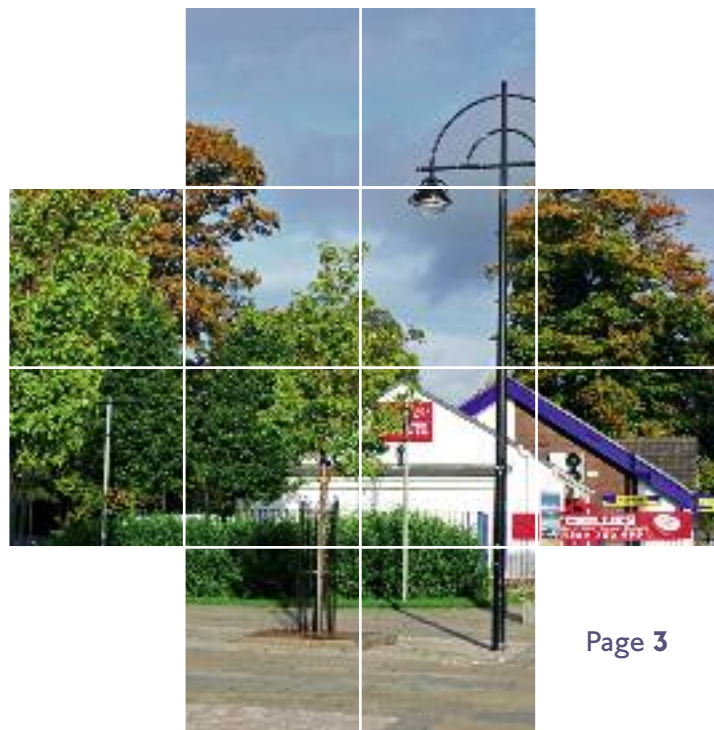
Mike Greig and Diane Davidson Kinghorn from Loch Lomond & The Trossachs National Park Authority worked with the Steering Group to support the consultation process. Collette Wells was the Community Profiler.

All photos have been kindly supplied by members of the community, with special thanks to Jim McQueen and Jim Biddulph.

LOCAL PEOPLE HAVE THEIR SAY

The Plan was prepared following extensive consultation with the community over the period from May to August 2007. Consultation included:

- A series of interviews with different groups and individuals representing all aspects of the community
- A community views survey that was widely available for everyone to complete
- A community profile detailing facts and figures about the community
- A “drop in” Local Plan Open Day
- A Community Futures Open Day



OUR COMMUNITY NOW

We have summarised below the views from our COMMUNITY VIEWS SURVEY.

COMMUNITY VIEWS SURVEY		
WHAT WE LIKE - THE TOP FIVE		% Responses
1	Balloch Park and the recent improvements there	36%
2	Close to Loch Lomond and the surrounding countryside	20%
3	Good transport links by bus, train, car and bicycle	19%
4	The recent improvements to the streetscape	17%
5	We are close to the countryside yet also close to the city	16%

QUOTES FROM THE SURVEY

- "The vast improvement in Balloch Park with extra parking and many new paths"*
- "Balloch Park is a nice place for a walk, especially the Walled Garden"*
- "It is beautiful, with the hills and the loch close by"*
- "Glasgow is easy by train or bus"*
- "It is a central location, easy access for trains and airport"*
- "I think the village square and the stone walls are lovely"*
- "Conveniently placed for both the loch and hills and close enough to the city for shops and theatre"*

WHAT WE DON'T LIKE - THE TOP FIVE		% Responses
1	Anti social behaviour	21%
2	The poor state of our public toilets	17%
3	The litter (especially at weekends)	16%
4	Lack of parking for locals and visitors	16%
5	Youths hanging about on the street with nothing to do	15%

QUOTES FROM THE SURVEY

- "Drunks, vandalism and fear of walking on my own"*
- "The anti social behaviour, drink and drugs really brings the area down"*
- "Toilets for a supposed tourist village are disgraceful"*
- "I am really angry about the state of the public toilets"*
- "Where do our visitors park? There's not enough parking for locals"*
- "There is not much for youths to do"*
- "Teenagers gathering, hanging about and causing trouble"*



OUR COMMUNITY NOW

We have summarised below some of the information from the COMMUNITY PROFILE.

COMMUNITY PROFILE 2008

Location

Located at the southern end of Loch Lomond, Balloch & Haldane Community Council area comprises Balloch, Mill of Haldane and Jamestown on the edge of the Vale of Leven and Dumbarton conurbation. Balloch is the southern gateway to Loch Lomond and The Trossachs National Park; it is a tourist hub and the home of the National Park Headquarters. This plan deals with the whole of Balloch & Haldane Community Council area, although not all of the community council area falls within the National Park.

Population

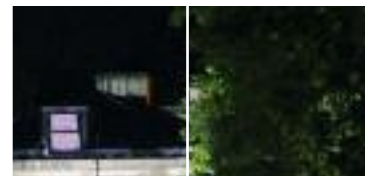
Census figures for 2001 show a population of 6137 people in the whole of the Community Council area with 2653 separate households, of these 875 households (2,280 people) are within the National Park boundary. In 2001 the population of Balloch & Haldane Community Council area had very similar age structures to the national average while the proportion of young people aged 5 - 15 is greater than that for West Dunbartonshire.

Housing

Within Balloch and Haldane Community Council area, 34% of houses are either rented from the council or socially rented from other organisations. This is a higher percentage than the national average and significantly higher than the National Park. The Mill of Haldane housing estate is currently going through a major regeneration project and the quality and design of housing is improving. There have been a number of private housing developments and new flats built in the community council area in the last 10 years.

Employment & The Local Economy

The majority of employers in Balloch and Jamestown are commercial enterprises. Most of these commercial enterprises are tourism and hospitality related with over 30 businesses. The second most significant sector is retail with 22 outlets. Public service is also significant with the Head Quarters of the National Park located in the community alongside other jobs in education, transport and environmental maintenance. People commute into and out of the area for work.



Roads and Transport

Balloch has good road, rail, bus and cycle connections and is the southern gateway to the National Park. The A82 dual carriageway connects to Glasgow and the central Scotland motorway system as well as north along Loch Lomondside. Balloch train station provides a link to the national rail network and Balloch also has a busy bus stance with bus services connecting throughout the area. Glasgow International Airport is 25 minutes drive away.

Community Organisations and Facilities

Balloch does not have a community centre. The three church halls are used by the wider community for a range of activities and functions, however these are running at capacity and it can be very difficult to get space. Thirty different community groups are active within the area and 14 of them use the church halls on a regular basis. Suitable meeting space is at a premium in the whole area.

Education

Balloch & Haldane Community Council area has 3 primary schools. There is no secondary school in the immediate area, the nearest being the Vale of Leven Academy in Alexandria and Our Lady's & St Patrick's High School in Dumbarton.

Health and Care Services

There are no doctor's surgeries in the Balloch and Haldane Community Council area however GP services are available 2 miles away in Alexandria. The Vale of Leven hospital in Alexandria no longer has a 24hr Accident & Emergency Unit but does have a cardiac care unit. All services are currently under review and the most recently published recommendations from Greater Glasgow Health Board amount to virtual closure of our hospital.

Leisure and Recreation

The open spaces in and around Balloch provide a wide range of leisure and recreation opportunities for visitors and locals alike. Attractions include the recently improved Balloch Castle Country Park with play areas and renovated walled garden. The paddle steamer "Maid of the Loch" is currently being used as a restaurant and function suite until she is made ready to sail again. Balloch Village has shops, hotels and restaurants, and importantly the Loch Lomond Shores development with its retail crescent, Aquarium and the National Park Gateway Centre. Despite all of these attractions, lack of indoor wet weather recreational facilities limits the opportunity to make Balloch an all-weather year-round tourist destination.

Environment and Heritage

Loch Lomond and its surrounding hills provide a magnificent backdrop and opportunities to explore the countryside right on Balloch and Haldane's doorstep. Wildlife, especially water birds, congregate on the River Leven that flows through Balloch from the Loch to the Clyde. The river is noted for its fishing. The parkland landscape of Balloch Park provides a living link to the heritage of the area, including Balloch Castle which was built in 1808 by John Buchanan. Mill stones and sluice gates in the Mill of Haldane are a listed archeological site.



OUR VISION FOR THE FUTURE OF BALLOCH AND HALDANE

This new vision statement has been prepared to reflect the aspirations of our community.

BALLOCH AND HALDANE VISION STATEMENT

The type of place we want Balloch to be:

Balloch will be a inclusive community that welcomes tourists and provides amenities for all, where businesses prosper and the environment is managed to ensure a sustainable legacy for future generations. To achieve this, we will strive to become:

A thriving community...

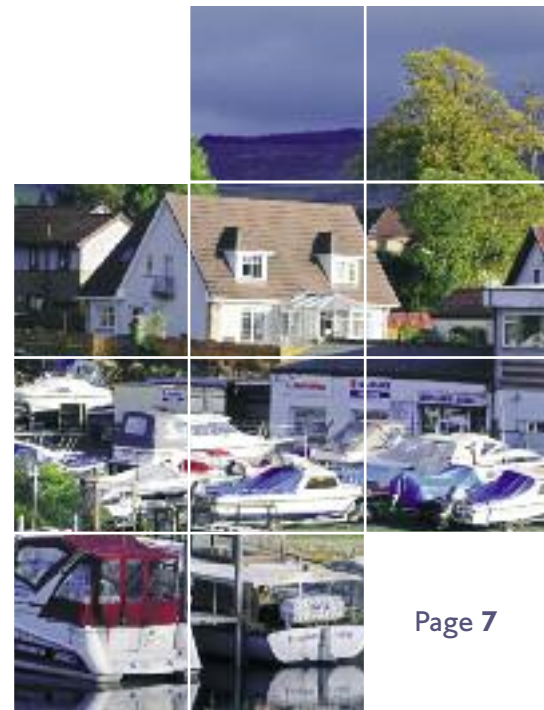
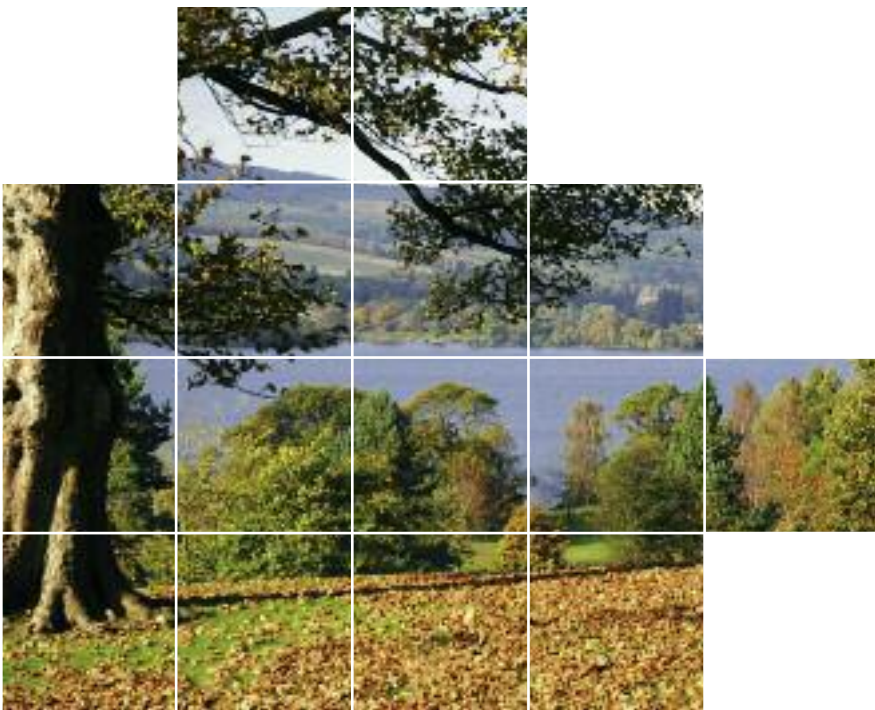
...determined to make changes for the better. Using “growth” positively to develop the village and its environs in ways that benefit the whole community through continuing improvements to the environment and our local facilities and services.

An active and safe community...

...where visitors and locals feel comfortable to enjoy the area. A community that deals positively with anti social behaviour and has superb social and community amenities for young and old alike. Promoting good community spirit and drawing closer links with neighbouring communities.

The Gateway to the National Park...

...a well publicised and well promoted open and welcoming area for tourists with facilities for both visitors and local residents. The springboard for visitors to the Park with a comprehensive visitor management scheme in place, building on and celebrating the best of its heritage.



MAIN THEMES & PRIORITIES

These are the things that the community, in partnership with a range of agencies and supporters, will aim to achieve over the next few years.

THEME 1 - IMPROVE OUR COMMUNITY SERVICES AND FACILITIES

There is a real opportunity to improve services and facilities for everyone, young and old, visitors and locals alike. Developing indoor recreation and leisure facilities will allow visitors and locals to participate in a wide range of activities whatever the weather.

MAIN PRIORITIES

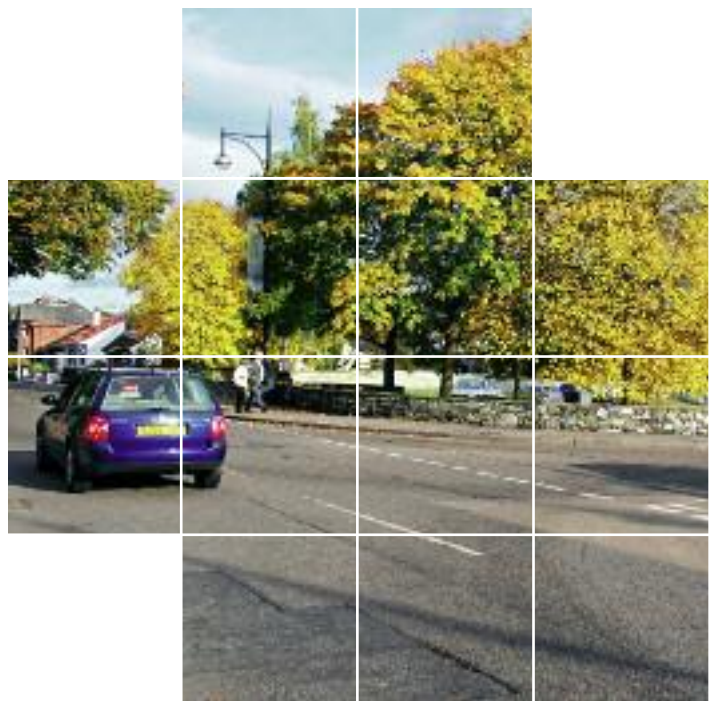
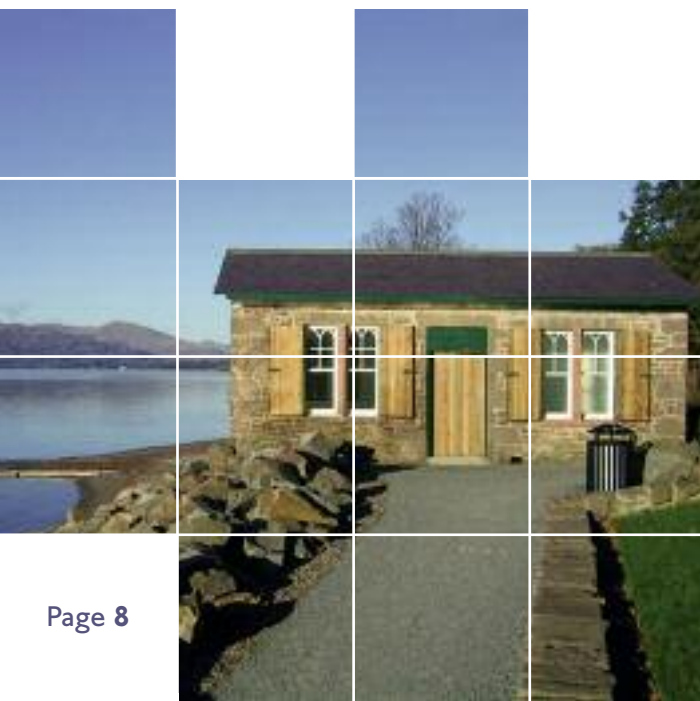
- Develop indoor leisure and recreation facilities
- Hold more events for locals and tourists
- Develop a community centre for all
- Litter awareness

THEME 2 - IMPROVE OUR LOCAL INFRASTRUCTURE

To make the most of what Balloch and Haldane has to offer we need the right infrastructure in place.

MAIN PRIORITIES

- Improve public toilets
- Create a modern transport interchange facility
- Improve parking provision
- Improve roads and pavements
- Address erosion on the banks of the River Leven
- Work towards a flood prevention plan
- Retain Moss o' Balloch as a green space



THEME 3 - IMPROVE COMMUNITY SAFETY

People in Balloch and Haldane want to feel comfortable walking around their community day or night. Community safety is brought about by a mixture of infrastructure measures like improved lighting and also by improving community spirit within the area.

MAIN PRIORITIES

- More visible Police presence
- Improve safety in Balloch Park

THEME 4 - MORE FOR YOUNG PEOPLE TO DO

Although there is a great overlap with Theme 1 - Improving Community Facilities - this theme has been identified separately to strengthen the focus on the specific needs of young people in Balloch and Haldane. By providing alternatives to 'hanging around the streets with nothing to do', activities provided for young people are likely to have a positive effect on community spirit and perceptions of community safety.

MAIN PRIORITIES

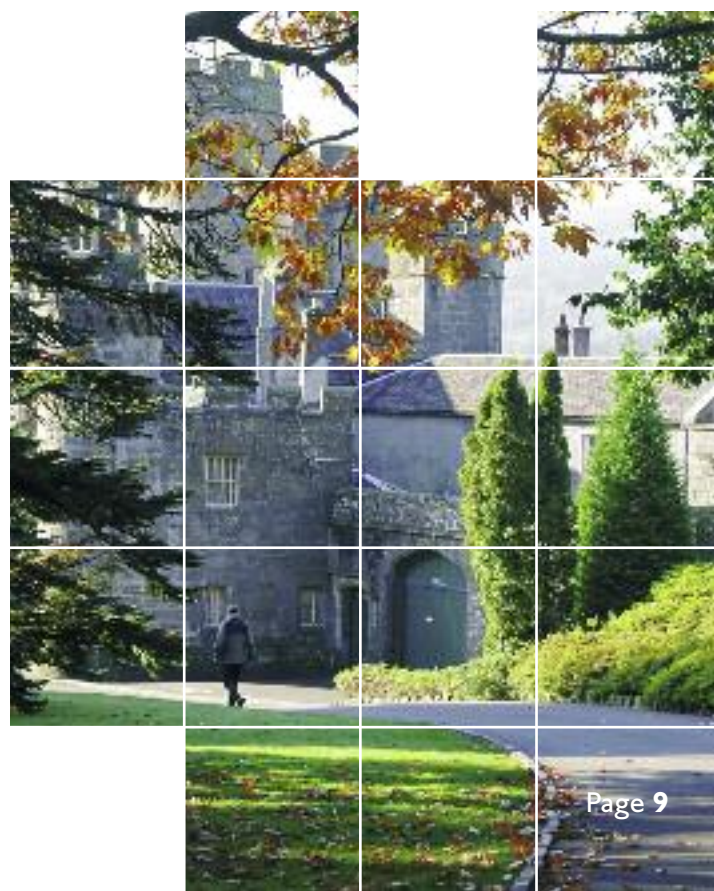
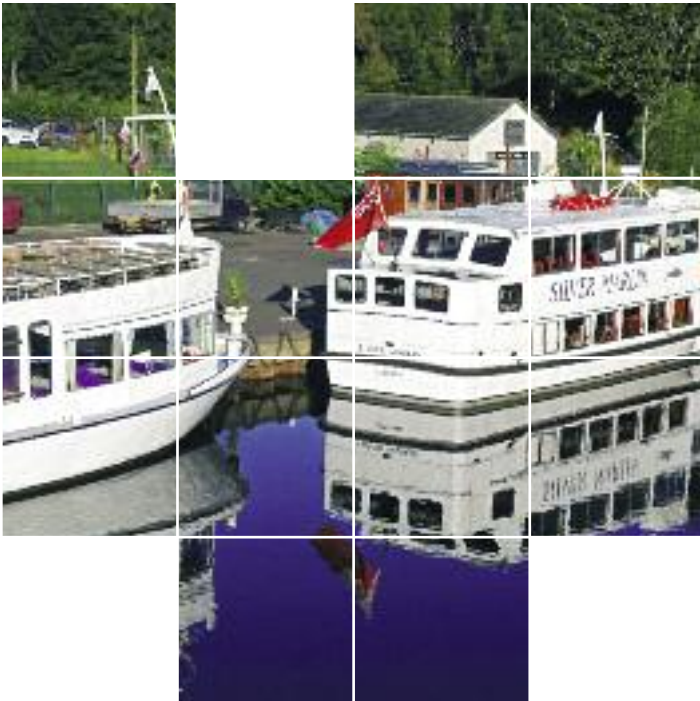
- Establish the needs of young people in the area
- Develop more sport, recreational activities and clubs

THEME 5 - DEVELOP TOURISM

Tourism has been important to the area for many years and visitors are currently the mainstay of the economy. As a gateway to the National Park the village has a key role to play in welcoming visitors and can benefit from the economic activity generated through tourism if this is well managed and balanced with the needs of local residents.

MAIN PRIORITIES

- Improve path links between Lomond Shores and Balloch Park
- Improve sign posting around Balloch
- Restore and make more use of Balloch Castle



ACTION

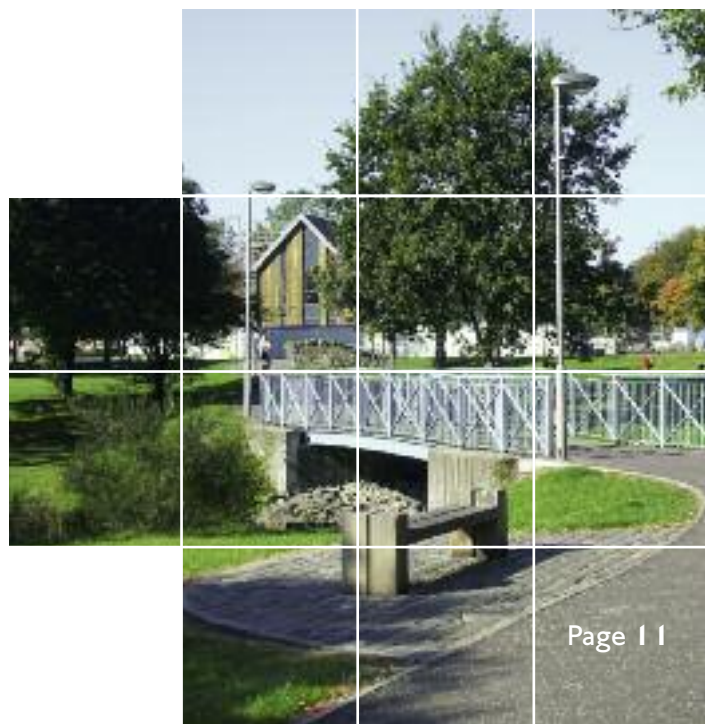
Making progress - some of the action steps to be taken over the next 12 months:

THEME 1 IMPROVE OUR COMMUNITY SERVICES AND FACILITIES	
PRIORITY 1	DEVELOP INDOOR LEISURE AND RECREATION FACILITIES <ul style="list-style-type: none"> ■ Work with Scottish Enterprise Dunbartonshire and potential commercial developers to ensure that any proposals for the development of the former railway land north of Balloch Road on the west bank of the Leven includes indoor leisure and recreation facilities available to local residents as well as visitors
Action by	Balloch and Haldane Community Council, Scottish Enterprise Dunbartonshire, West Dunbartonshire Council
PRIORITY 2	HOLD MORE EVENTS FOR LOCALS AND TOURISTS <ul style="list-style-type: none"> ■ Work with Lomond Shores to promote more events throughout the year - for example summer concerts, pipe bands and folk groups ■ Promote the use of the Moss o' Balloch to hold more events over the summer months
Action by	Balloch and Haldane Community Council, Lomond Shores Management Committee, National Park Gateway Centre, Scottish Enterprise Dunbartonshire, Balloch Forum and local businesses
PRIORITY 3	DEVELOP A COMMUNITY CENTRE FOR ALL AGES <ul style="list-style-type: none"> ■ Seek support for a feasibility study to explore the development of a new Balloch Community Centre ■ Identify possible locations for the project ■ Work closely with the local community to ensure that the project addresses the needs of a wide cross section of local interests and groups
Action by	West Dunbartonshire Council, Balloch and Haldane Community Council
PRIORITY 4	LITTER AWARENESS <ul style="list-style-type: none"> ■ Work with local business to reduce litter ■ Provide blue bins at Balloch Co-op ■ Provide more dog bins
Action by	Balloch & Haldane Community Council, West Dunbartonshire Council



THEME 2 IMPROVE OUR LOCAL INFRASTRUCTURE	
PRIORITY 1	IMPROVE OUR PUBLIC TOILETS <ul style="list-style-type: none"> ■ Renovate or relocate the public toilets at the bus stance and have them open longer ■ Extend and publicise the opening hours of the public toilets at Balloch Park ■ Renovate and improve the toilets at Balloch Castle ■ Improve signage directing visitors to public toilets
Action by	West Dunbartonshire Council, Balloch Businesses, Balloch and Haldane Community Council
PRIORITY 2	CREATE A MODERN TRANSPORT INTERCHANGE FACILITY <ul style="list-style-type: none"> ■ Ensure that this includes parking for coaches ■ Lobby for "CityLink" coaches to stop at the Balloch interchange
Action by	Balloch and Haldane Community Council, Scottish Enterprise, National Park Authority
PRIORITY 3	IMPROVE CAR PARKING PROVISION <ul style="list-style-type: none"> ■ Identify existing parking facilities, current needs and level of future use ■ Identify possible sites ■ Develop short and long stay car parking to suit locals, visitors and commuters ■ Enforce parking restrictions of double yellow lines on Balloch Main Street
Action by	West Dunbartonshire Council, Balloch & Haldane Community Council, National Park Authority, Strathclyde Police
PRIORITY 4	IMPROVE ROADS AND PAVEMENTS <ul style="list-style-type: none"> ■ Introduce traffic calming measures to Balloch Road ■ Improve road crossing safety near Jamestown Primary School ■ Maintain road and information signs
Action by	Balloch & Haldane Community Council, West Dunbartonshire Council and the National Park Authority

CONTINUED

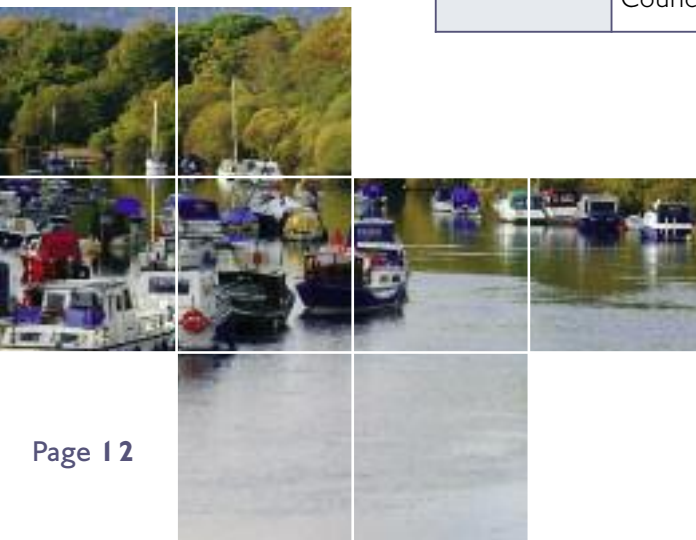


CONTINUED

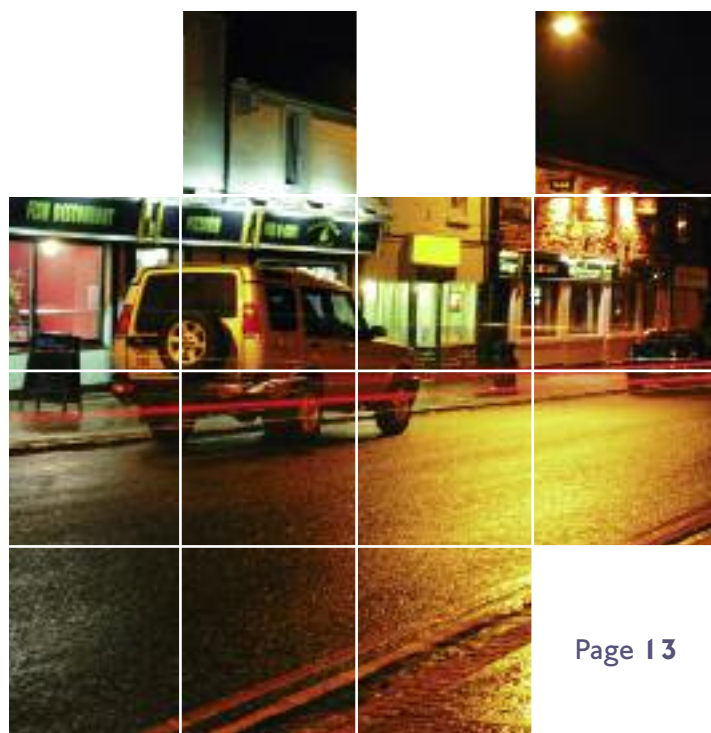
THEME 2 IMPROVE OUR LOCAL INFRASTRUCTURE	
PRIORITY 5	TIDY UP THE RIVER LEVEN <ul style="list-style-type: none"> Remove sunken boats from the river Use the National Park loch registration system to identify and inform boat owners of any clean up operation
Action by	National Park Authority, local boat clubs, Balloch & Haldane Community Council
PRIORITY 6	DEVELOP A FLOOD AND EROSION PREVENTION PLAN <ul style="list-style-type: none"> Identify the current level of understanding held by the relevant authorities about the problem of flooding Involve local residents in creating a flood prevention plan Identify bank erosion hot spots
Action by	Scottish Water, West Dunbartonshire Council, National Park Authority, Scottish Environment Protection Agency
PRIORITY 7	RETAIN MOSS O' BALLOCH AS A GREEN SPACE <ul style="list-style-type: none"> Actively lobby for the emerging National Park Local Plan to retain the Moss as open green space for community use
Action by	Balloch & Haldane Community Council, West Dunbartonshire Council, National Park Authority



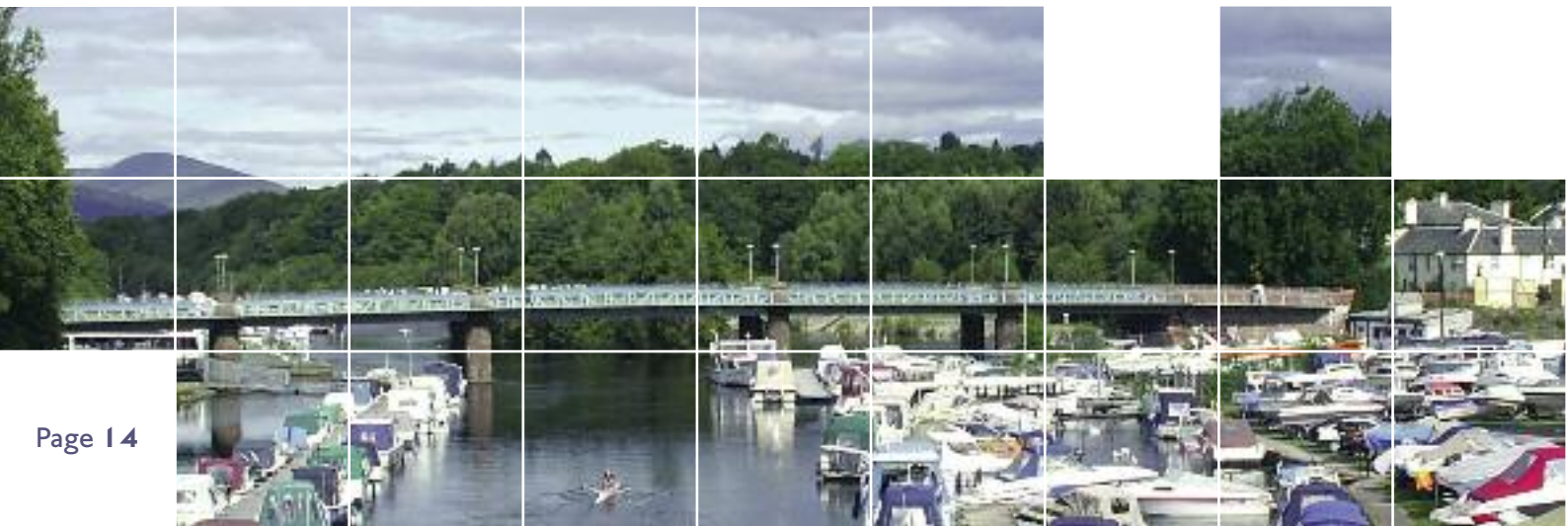
THEME 3 MORE FOR YOUNG PEOPLE TO DO	
PRIORITY 1	ESTABLISH THE NEEDS OF YOUNG PEOPLE IN THE AREA <ul style="list-style-type: none"> Set up a project to involve young people in developing an understanding of their needs Carry out an audit of existing facilities and the range of activities available currently Identify opportunities for improvement Organise study visits or trips to other areas and projects to broaden understanding of what is possible
Action by	Young residents of Balloch and Haldane, Balloch and Haldane Community Council, West Dunbartonshire Council, Tulloch Trust
PRIORITY 2	DEVELOP MORE SPORT AND ACTIVITIES <ul style="list-style-type: none"> Publicise existing organisations & facilities Encourage young people to participate in existing community based clubs and activities Create changing facilities at football pitches
Action by	Balloch & Haldane Community Council, West Dunbartonshire Council



THEME 4 IMPROVE COMMUNITY SAFETY	
PRIORITY 1	<p>MORE VISIBLE POLICE PRESENCE</p> <ul style="list-style-type: none"> ■ Continue to work with police to highlight the need for increased patrols during periods of high visitor numbers ■ Publicise a contact phone number for cases of anti social behaviour ■ Lobby for pro-active policing throughout the community council area ■ Install more CCTV cameras to monitor the river bank
Action by	Strathclyde Police, West Dunbartonshire Council, Balloch and Haldane Community Council, Balloch Forum
PRIORITY 2	<p>IMPROVE SAFETY IN BALLOCH PARK</p> <ul style="list-style-type: none"> ■ Install additional CCTV cameras at strategic points ■ Identify areas where lighting of pathways is inadequate ■ Lobby for improvements
Action by	Clydebank CCTV Trust, Balloch and Haldane Community Council, West Dunbartonshire Safety Partnership, Balloch Forum



THEME 5 DEVELOP TOURISM	
PRIORITY 1	IMPROVE PATH LINKS BETWEEN LOMOND SHORES AND BALLOCH PARK <ul style="list-style-type: none"> ■ Draw up proposals for improved path links throughout the community ■ Consider options for a river crossing to link Balloch Park with Lomond Shores
Action by	Local Business, National Park Authority, Visit Scotland, Lomond Shores Management Committee
PRIORITY 2	IMPROVE SIGN POSTING AROUND BALLOCH <ul style="list-style-type: none"> ■ Have “Balloch - Loch Lomond” on the train station sign ■ Improve signage around Balloch especially to give clearer information about routes between the station, Balloch village, Lomond Shores and Balloch Country Park and the Castle
Action by	Local Business, National Park Authority, Visit Scotland, Lomond Shores Management Committee
PRIORITY 3	RESTORE & MAKE MORE USE OF BALLOCH CASTLE <ul style="list-style-type: none"> ■ Undertake a feasibility study to find out the best use of the building
Action by	West Dunbartonshire Council, Balloch & Haldane Community Council



MAKING IT HAPPEN

Balloch & Haldane Community Council, through its membership of various committees and boards in West Dunbartonshire, will help to deliver this action plan and coordinate with many of our partners.

The Community Council is currently involved in the following boards and committees:

- The Balloch Forum (working on the Balloch Framework)
- West Dunbartonshire Access Panel
- Friends of Balloch Country Park
- Loch Lomond and Trossachs National Park Community Futures Network
- West Dunbartonshire Strategic Safety Partnership
- West Dunbartonshire Community Council Forum
- The Association of CC's in the National Park (ACC)
- The Mill of Haldane Community Association
(Project Development Group)
(Housing Group, CUBE HA and Dunbritton HA)
(Communications Group)
- West Dunbartonshire Community Participation Committee (CPC)
- West Dunbartonshire Community Planning Board
(Environment committee)
(Project Development Committee)
(Forums Coordinating Group)
- The Environment Trust
- Care and Repair (Trust)
- Greenspace Partnership
- Jamestown Community Group

All of the community - clubs, organisations, individuals and groups in the Balloch and Haldane area - will also be part of the joint effort to make this Action Plan a reality.

If you wish to become involved please contact: Murdoch Cameron MBE, Chairman, Balloch & Haldane Community Council on 01389 754431 or visit our web site at www.ballochhaldanecc.org.uk

Members of the Community Council will be pleased to hear your ideas and to advise you on where you can find help or advice on community matters.





Loch Lomond & The Trossachs National Park

Pàirc Nàiseanta Loch Lomhainn
& nan Trosachan

COMMUNITY FUTURES

PROGRAMME

COMMUNITY FUTURES PROGRAMME

Balloch & Haldane Community Council has been supported in the preparation of their new Community Action Plan by the National Park's Community Futures Programme.

Through the Community Futures Programme, all communities in the Park prepared their first Community Action Plans between 2001 and 2003. These Action Plans assisted communities to identify and develop their priorities for projects and actions. They also helped communities to clearly represent their main needs and aspirations and to influence the preparation of the National Park Plan.

Communities have also been assisted to develop local and area based organisations and 20 Community Development Trusts have been established as well as 4 Area Networks.

The Community Futures Programme is supporting all 21 communities in the National Park area to revise and renew their Community Action Plans.

In revising their Community Action Plans, communities are continuing to shape and influence their own development by:

- Updating facts and figures and views about their community
- Developing a clear set of priorities for their community over the next 3 - 5 years
- Ensuring that there is a strong community mandate for projects and actions
- Offering opportunities for new people to be involved and new ideas to flourish
- Enabling informed community input to the National Park Local Plan

For more information contact:

Lesley Campbell

Rural & Community Support Manager

TEL: 01389 722600

email: Lesley.campbell@lochlomond-trossachs.org



Community Futures Programmes of local community planning and community engagement are designed and supported by the Small Town and Rural Development Group. www.stardevelopmentgroup.org

